

CA-MRC0025

TRUEVALUE HARDWARE STORE
321 SECOND STREET
LIVINGSTON, CA 95334

RECEIVED

DEC 1 2010

PLANNING

clearwire®

November 29, 2010

View #: 1



Location



Existing



Proposed

The illustration above is a representation of the proposed project based on information provided by the client. Actual construction may vary dependent on approved construction plans and therefore PTS (Pacific Telecom Services) is not responsible for any post production design changes. Monotree disclaimer: (In the event that the proposed installation includes a monotree) The proposed installation is an artistic representation of a tree, and not intended to be an exact reproduction of an actual living tree. The final installation will have cables, cable ports, and various attachments, such as antennas, nuts, and bolts. While every effort will be made to disguise these components, they will not be readily apparent to the casual observer or passerby. However, upon close scrutiny, the true nature of the installation will be apparent.

Clearwire
4400 Carillon Point
Kirkland, WA 98033
Eric Hale - Phone: (559) 790-8931

Prepared by: CJL
Approved by: RLT

PTS
Pacific Telecom Services, LLC
3199 C Airport Loop Drive, Costa Mesa, CA 92626-3414

REV:
2

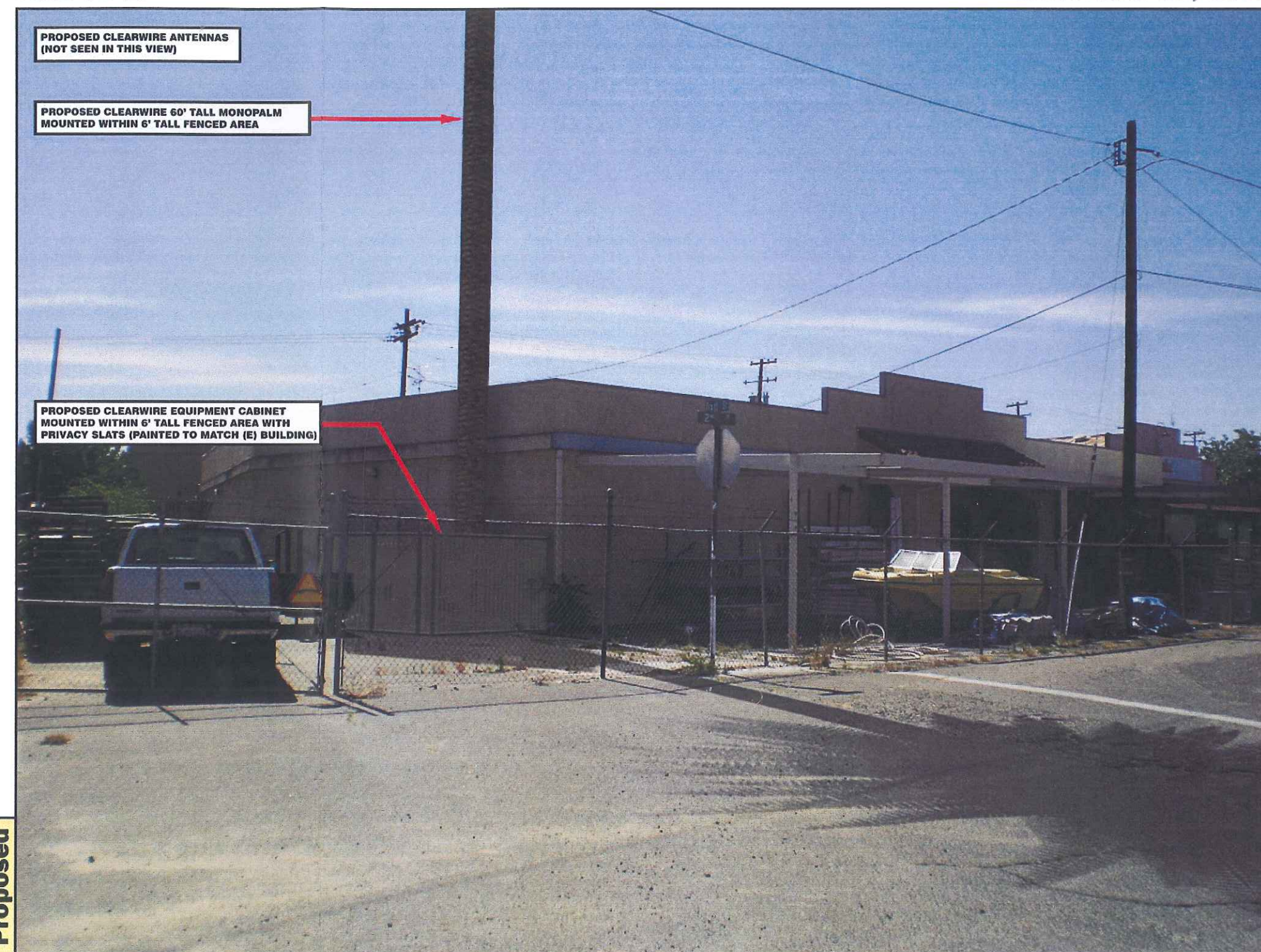
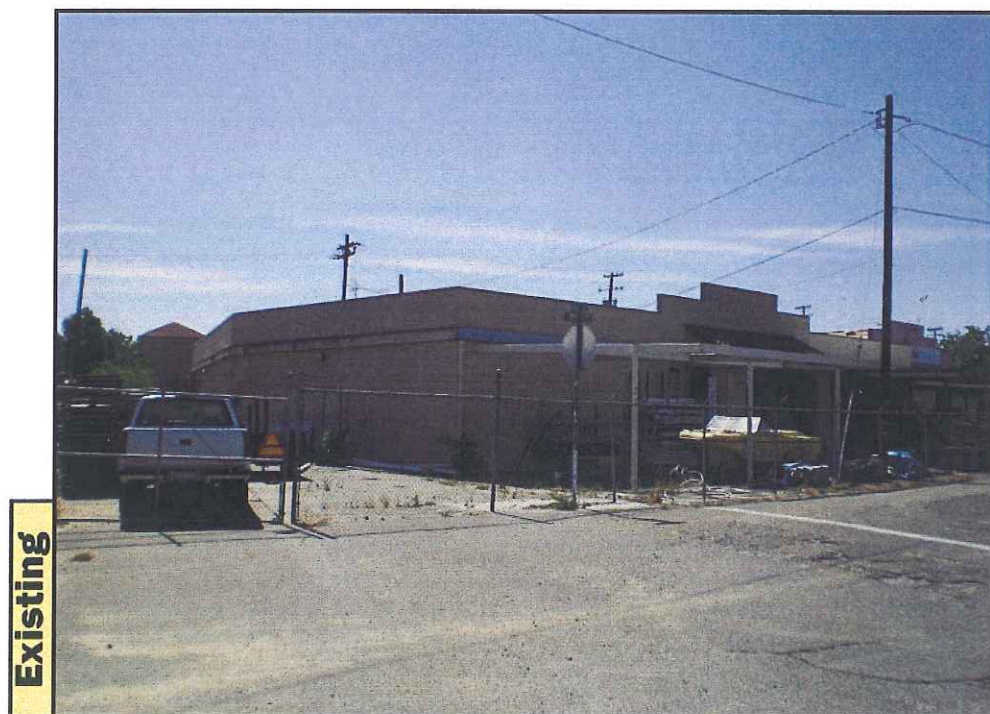
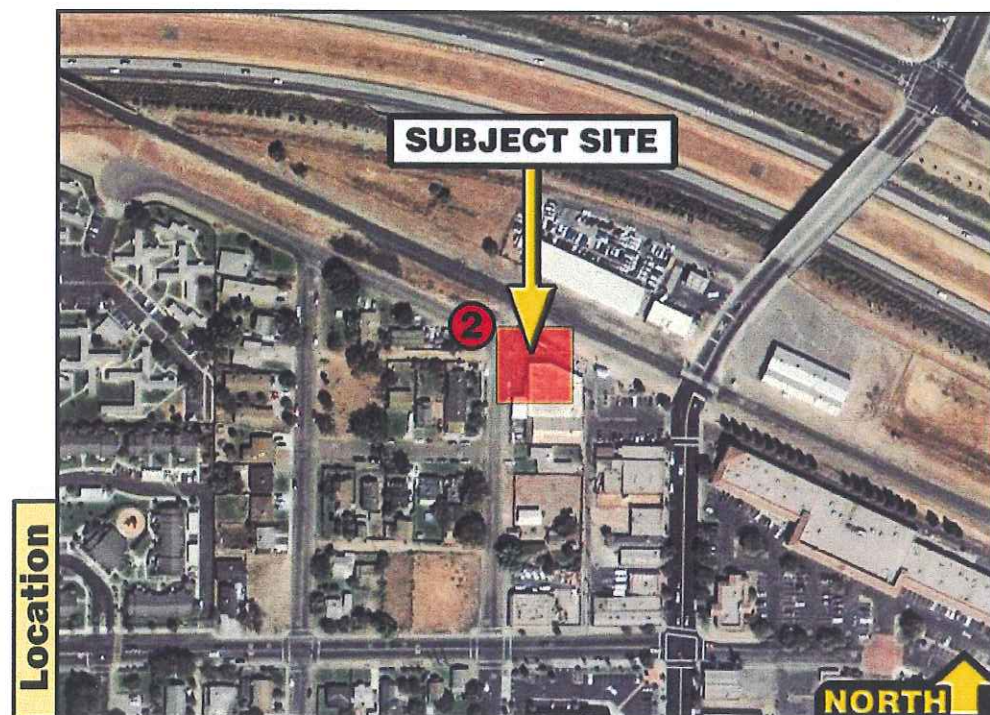
CA-MRC0025

TRUEVALUE HARDWARE STORE
321 SECOND STREET
LIVINGSTON, CA 95334

clearwire®

November 29, 2010

View #: 2



The illustration above is a representation of the proposed project based on information provided by the client. Actual construction may vary dependent on approved construction plans and therefore PTS (Pacific Telecom Services) is not responsible for any post production design changes. Monotree disclaimer: (In the event that the proposed installation includes a monotree) The proposed installation is an artistic representation of a tree, and not intended to be an exact reproduction of an actual living tree. The final installation will have cables, cable ports, and various attachments, such as antennas, nuts, and bolts. While every effort will be made to disguise these components, they will not be readily apparent to the casual observer or passerby. However, upon close scrutiny, the true nature of the installation will be apparent.

Clearwire
4400 Carillon Point
Kirkland, WA 98033
Eric Hale - Phone: (559) 790-8931

Prepared by: CJL
Approved by: RLT

PTS
Pacific Telecom Services, LLC
3199 C Airport Loop Drive, Costa Mesa, CA 92626-3414

REV: 2