

24-10

3-01  
3-17

Tax Rate Area

WALNUT AVE

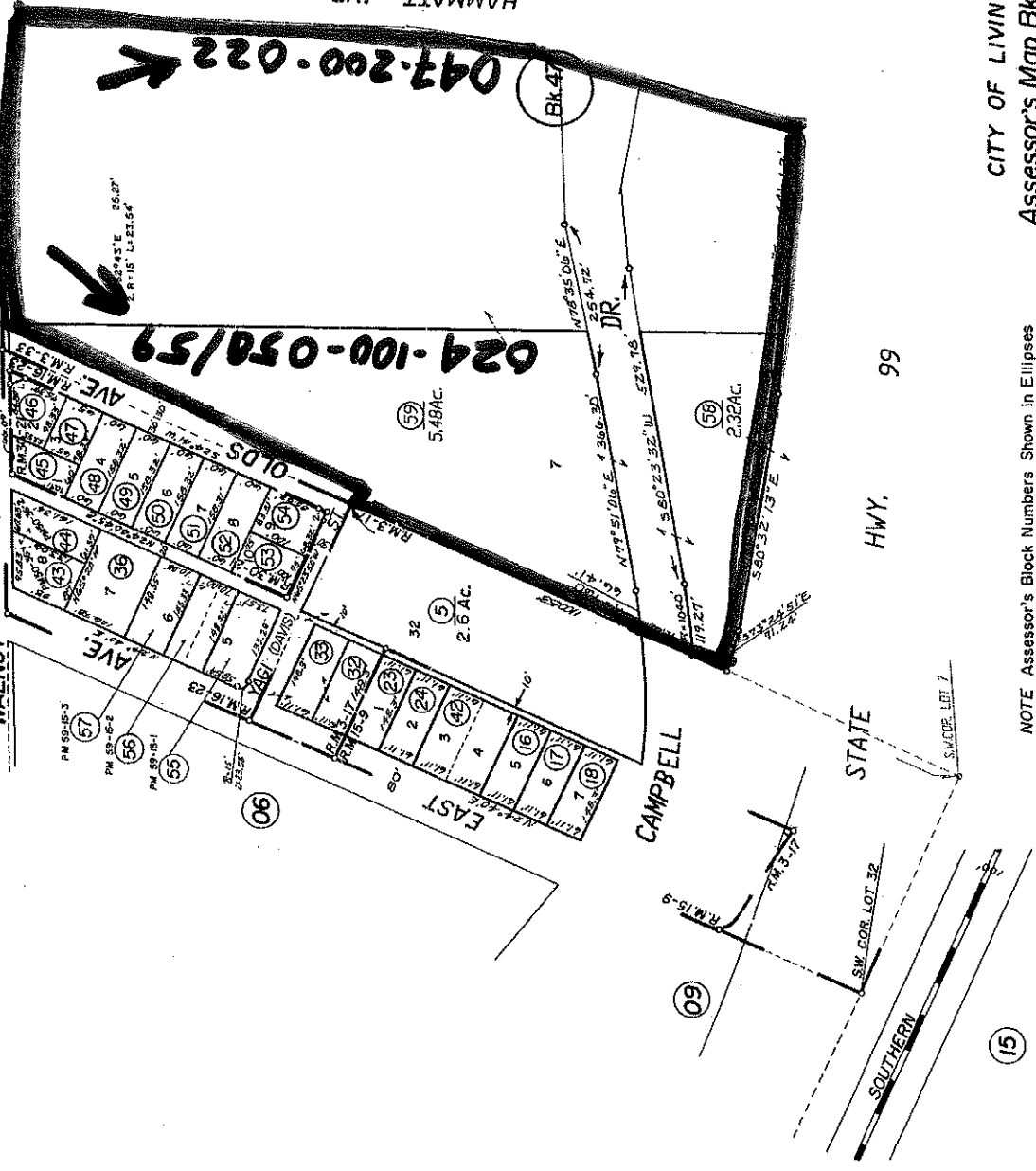
03

33

POR. SEC. 25 T. 6S. R. 1E. M.D.B. & M.

NOTE—  
This map is for Assessment purposes only.  
It is not to be construed as portraying  
legal ownership or divisions of land for  
purposes of zoning or subdivision law.

Brown Estates, R.M. Vol. 30, Pg. 21  
Cordella Tract R.M. Bk. 15, Pg. 9  
Livingston Colony Add. No. 1, R.M. Bk. 3, Pg. 17  
Mendoza Tract R.M. Bk. 16, Pg. 23  
Yamato Colony No. 2, R.M. Bk. 3, Pg. 33



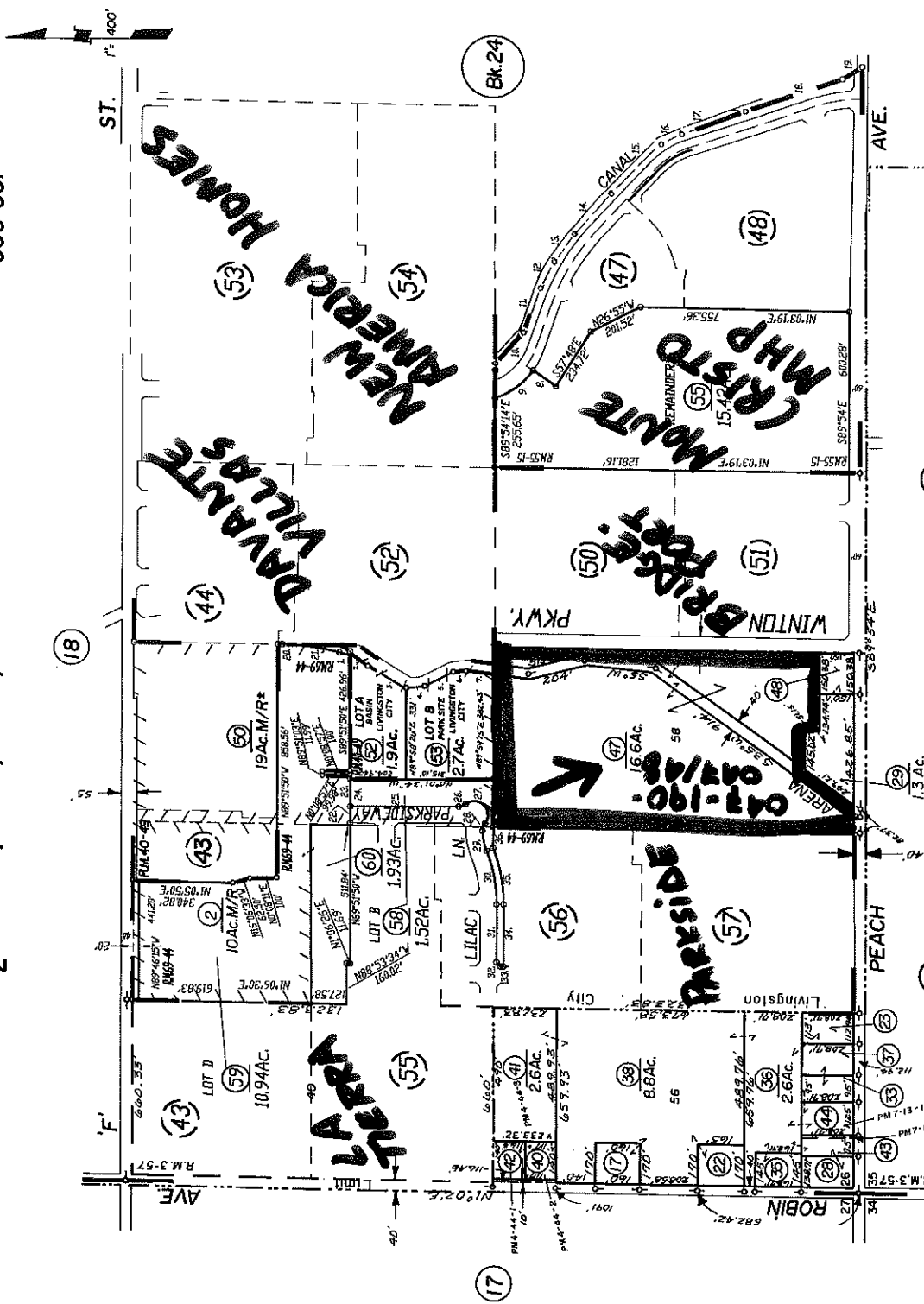
REDRAWN	8/60
REVISED	7/63
	11/74
	2/84
	7/85
	2-93
	12-29-2000

CITY OF LIVINGSTON  
Assessor's Map Bk. 24 Pg. 10  
County of Merced, Calif.  
1960

YAGI

POR. S 1/2 SEC. 26, T.6S., R.11E., M.D.B. & M.

NOTE --  
This map is for Assessment purposes only.  
It is not to be construed as portraying  
legal ownership or divisions of land for  
purposes of zoning or subdivision law.



1.	R-1024	L-40.65'
2.	N89°46'32"V	E-152.30'
3.	N89°46'32"V	E-152.30'
4.	N41°53'30"V	E-65.80'
5.	S89°46'32"V	E-142.87'
6.	S89°46'32"V	E-142.87'
7.	S89°46'32"V	E-142.87'
8.	N89°46'32"V	E-142.87'
9.	N89°46'32"V	E-142.87'
10.	N89°46'32"V	E-142.87'
11.	S77°40'20"V	E-181.00'
12.	S83°32'20"V	E-181.00'
13.	S83°32'20"V	E-181.00'
14.	S83°32'20"V	E-181.00'
15.	S83°32'20"V	E-181.00'
16.	S83°32'20"V	E-181.00'
17.	S83°32'20"V	E-181.00'
18.	S83°32'20"V	E-181.00'
19.	S83°32'20"V	E-181.00'
20.	S83°32'20"V	E-181.00'
21.	S83°32'20"V	E-181.00'
22.	S83°32'20"V	E-181.00'
23.	S83°32'20"V	E-181.00'
24.	S83°32'20"V	E-181.00'
25.	S83°32'20"V	E-181.00'
26.	S83°32'20"V	E-181.00'
27.	S83°32'20"V	E-181.00'
28.	S83°32'20"V	E-181.00'
29.	S83°32'20"V	E-181.00'
30.	S83°32'20"V	E-181.00'
31.	S83°32'20"V	E-181.00'
32.	S83°32'20"V	E-181.00'
33.	S83°32'20"V	E-181.00'
34.	S83°32'20"V	E-181.00'
35.	S83°32'20"V	E-181.00'
36.	S83°32'20"V	E-181.00'
37.	S83°32'20"V	E-181.00'
38.	S83°32'20"V	E-181.00'
39.	S83°32'20"V	E-181.00'
40.	S83°32'20"V	E-181.00'
41.	S83°32'20"V	E-181.00'
42.	S83°32'20"V	E-181.00'
43.	S83°32'20"V	E-181.00'
44.	S83°32'20"V	E-181.00'
45.	S83°32'20"V	E-181.00'
46.	S83°32'20"V	E-181.00'
47.	S83°32'20"V	E-181.00'
48.	S83°32'20"V	E-181.00'
49.	S83°32'20"V	E-181.00'
50.	S83°32'20"V	E-181.00'
51.	S83°32'20"V	E-181.00'
52.	S83°32'20"V	E-181.00'
53.	S83°32'20"V	E-181.00'
54.	S83°32'20"V	E-181.00'
55.	S83°32'20"V	E-181.00'
56.	S83°32'20"V	E-181.00'
57.	S83°32'20"V	E-181.00'
58.	S83°32'20"V	E-181.00'
59.	S83°32'20"V	E-181.00'
60.	S83°32'20"V	E-181.00'

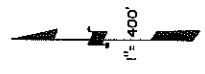
Assessor's Map Bk. 47 - Pg.19  
County of Merced, Calif.  
1983

NOTE - Assessor's Block Numbers Shown in Ellipses  
Assessor's Parcel Numbers Shown in Circles

Parkside At Livingston Unit No.1, R.M. Vol.69, Pg.26  
Country Glen Unit 1, R.M. Vol.40, Pg.49  
Livingston Land & Col. Co. Sub. No.2, R.M. Vol.3, Pg.57  
Monte Cristo Estates R.M. Vol.55, Pg.15

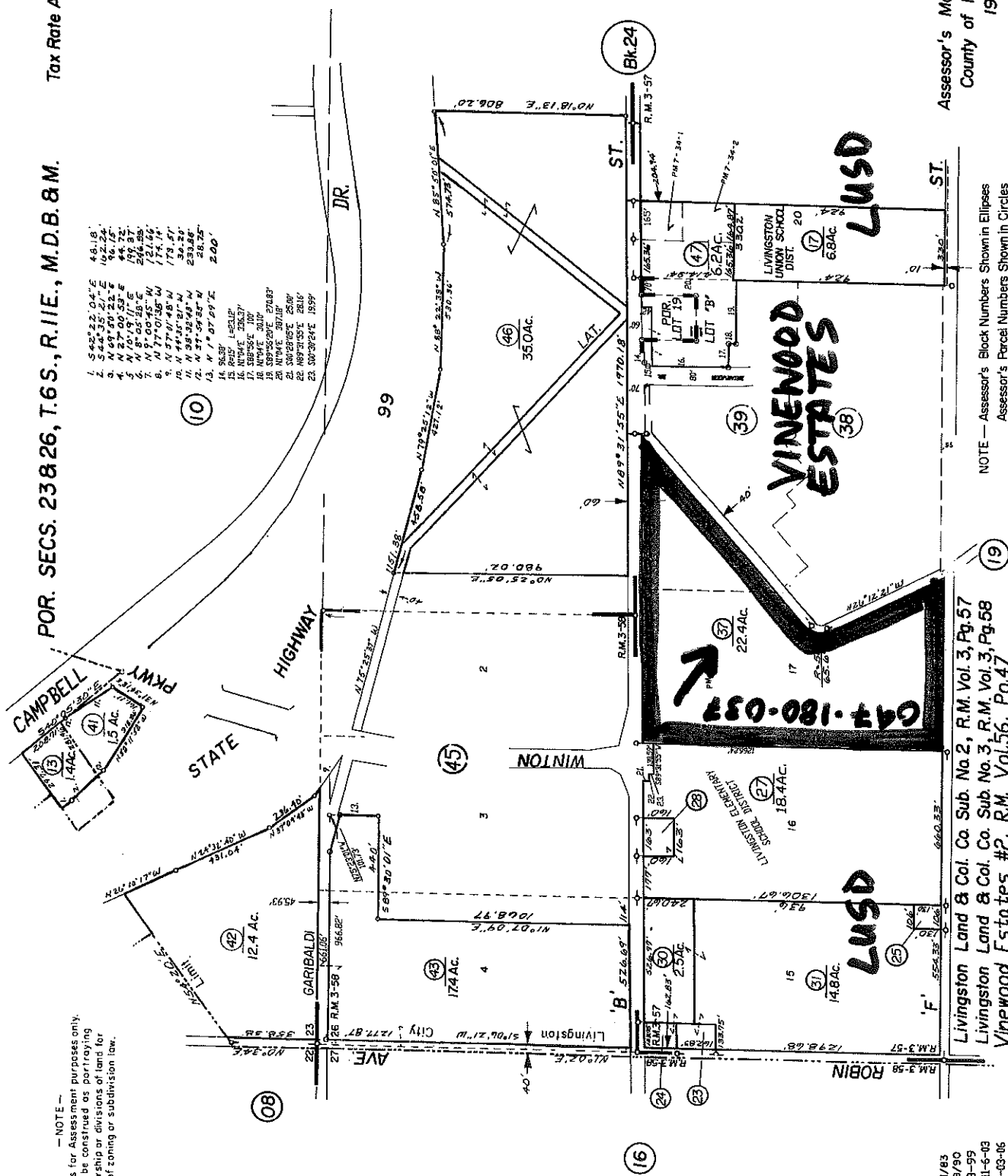
REDRAWN 11/83 7-05  
REVISED 5-92 8-05  
7-02 11-05  
11-03 12-05

Hhad



NOTE - This map is for Assessment purposes only. It is not to be construed as portraying legal ownership or divisions of land for purposes of zoning or subdivision law.

- 1. 542° 22.04' E 48.18'
- 2. 544° 35.21' E 102.24'
- 3. N 69° 00' 23" E 96.15'
- 4. N 10° 19' 17" E 192.37'
- 5. N 8° 05' 58" E 256.25'
- 6. N 1° 00' 45" W 121.64'
- 7. N 17° 01' 58" W 174.14'
- 8. N 37° 01' 58" W 173.51'
- 9. N 44° 33' 57" W 173.51'
- 10. N 38° 32' 54" W 233.88'
- 11. N 37° 59' 52" W 28.75'
- 12. N 1° 07' 59" E 2.00'
- 13. N 15° 22' 37" W 45.93'
- 14. N 15° 22' 37" W 45.93'
- 15. N 15° 22' 37" W 45.93'
- 16. N 15° 22' 37" W 45.93'
- 17. S 89° 56' 10" W 45.93'
- 18. N 15° 22' 37" W 45.93'
- 19. S 89° 56' 10" W 45.93'
- 20. S 89° 56' 10" W 45.93'
- 21. S 89° 56' 10" W 45.93'
- 22. N 89° 56' 10" W 45.93'
- 23. S 89° 56' 10" W 45.93'



Assessor's Map Bk. 47 - Pg.18  
County of Merced, Calif.  
1983

NOTE - Assessor's Block Numbers Shown in Ellipses  
Assessor's Parcel Numbers Shown in Circles

Livingston Land & Col. Co. Sub. No. 2, R.M. Vol. 3, Pg. 57  
Livingston Land & Col. Co. Sub. No. 3, R.M. Vol. 3, Pg. 58  
Vinwood Estates #2, R.M. Vol. 56, Pg. 47

REDRAWN 11/83  
REVISED 9/90  
B-99  
11-6-03  
11-03-06

# GALVAN-YONAN